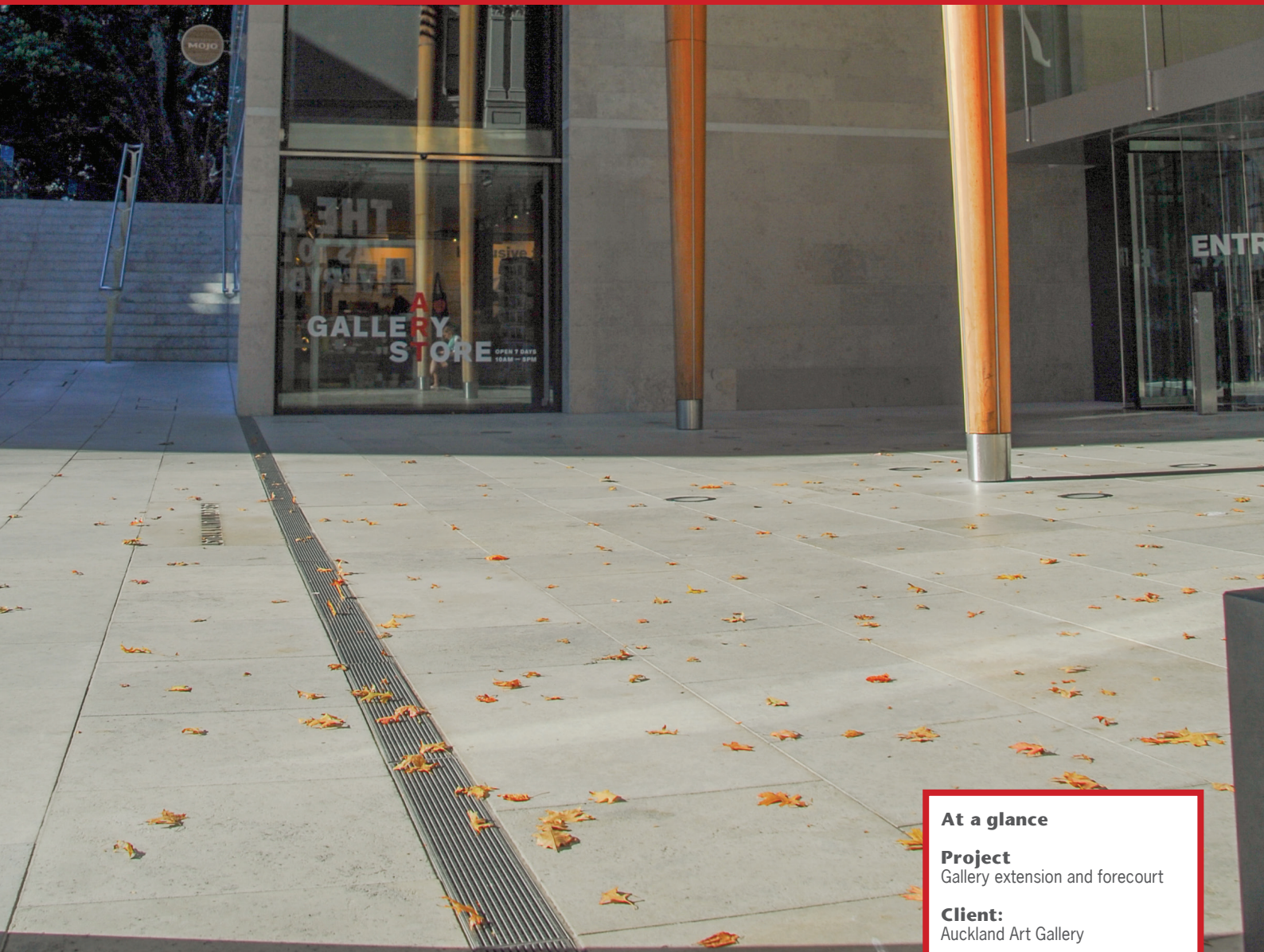
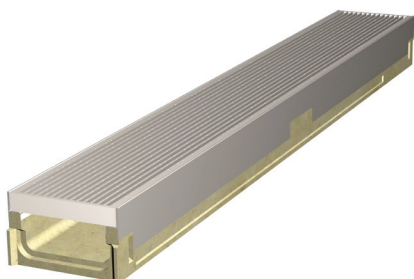


Auckland Art Gallery



SlabDrain H100K

The 2011 project to redevelop the Auckland Art Gallery sought to refurbish and strengthen the much loved existing building, increase the exhibition space by 75% and create terraces linking the spacious entrance forecourt to the nearby Albert Park.



When designing the link between Albert Park and the striking atrium now acting as the main entrance in the new building, specifiers encountered a problem with surface water drainage. The high tree-like canopies allowed rain into the forecourt and there was overspill from a featured fountain.

To make sure that excess surface water did not enter the building, designers were required to provide adequate drainage. The restricted depth available in the meant that the shallow depth SlabDrain was used.

100mm polymer concrete channels were selected along with stainless steel Heelsafe® anti-slip grates to complement other fittings in the building and give a high quality architectural finish.

At a glance

Project

Gallery extension and forecourt

Client:

Auckland Art Gallery

Brief:

To provide shallow depth drainage with a grate to match the surrounding architecture

Solution:

ACO's H100KS SlabDrain was used to provide surface drainage

Sales office

Telephone 0800 488 080
sales@aconz.co.nz

www.aconz.co.nz

