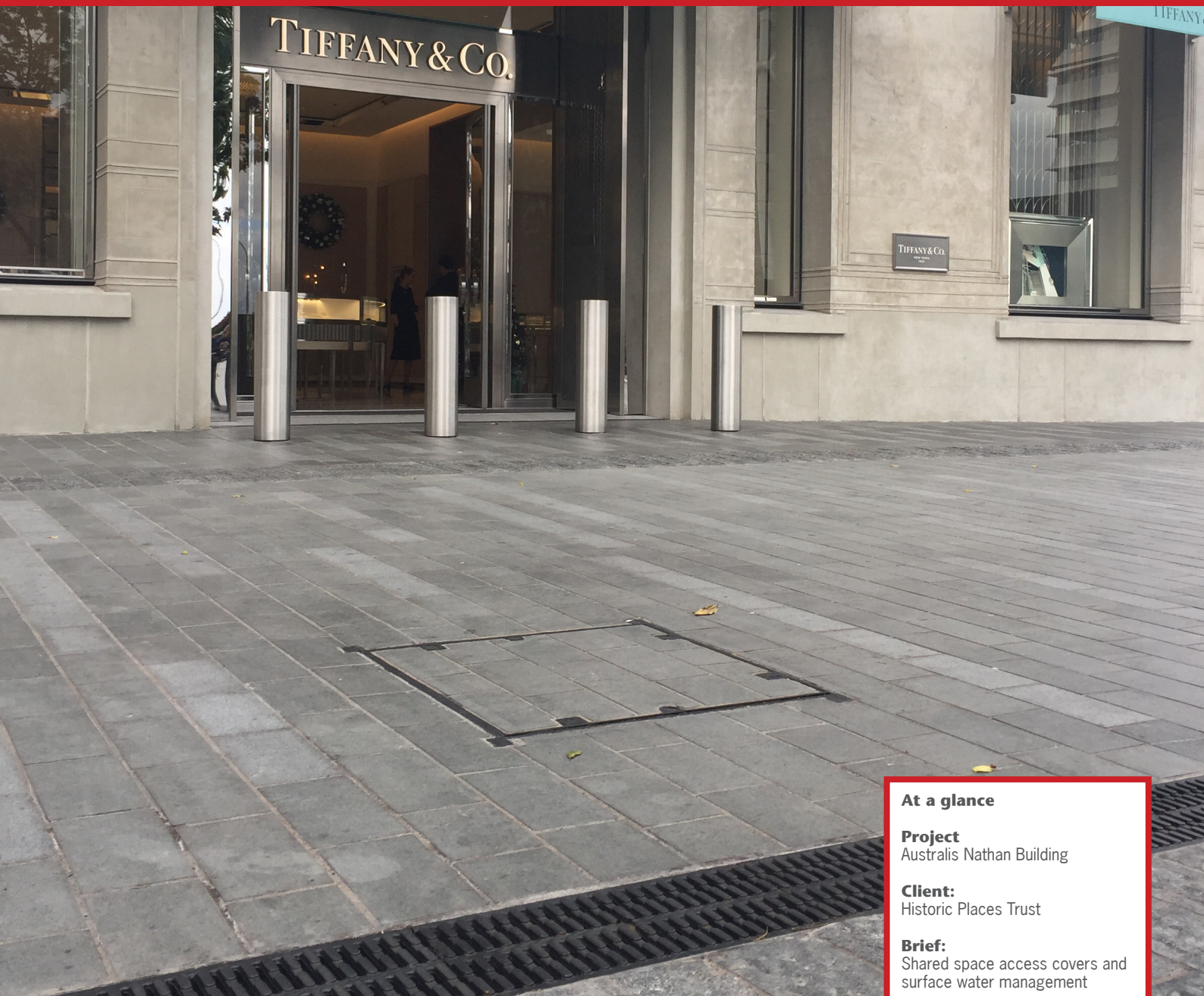
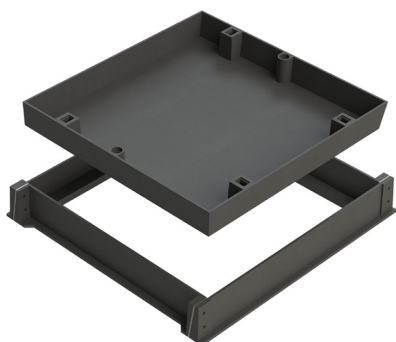


## Australis Nathan Building/Galway Street



### ACO KlassikDrain K200



Australis House and Nathan Building were built in 1904 and 1903 respectively. 2016 saw a refurbishment and to both, and opened with high profile tenants.

Outside, the shared space was upgraded. Ground falls required surface drainage, and service pits required a discrete access cover, all rated to load class D.

Designers chose ACO KlassikDrain with Iron Slotted Grates and ACC deep pan access covers, for their high quality and to match the existing aesthetic in the CBD area.

#### At a glance

**Project**  
Australis Nathan Building

**Client:**  
Historic Places Trust

**Brief:**  
Shared space access covers and surface water management

**Solution:**  
ACO's Rhinocast® deep pan covers and KlassikDrain K200

#### Sales office

Telephone 0800 488 080  
sales@aconz.co.nz

[www.aconz.co.nz](http://www.aconz.co.nz)

