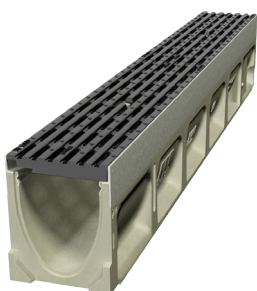


## Mission Bay Footpath Upgrade



### KlassikDrain K100 with Type 478Q Grates

Local businesses using the footpath for outdoor dining were impacting on pedestrians. Auckland Transport chose to widen the footpath, creating two dining areas along the building edge and kerb, all completed in time for the busy summer season.



The specification for the new footpath included three sections: dining against the building and planted kerb, and a passage for pedestrians. Landscape architects sought to delineate these areas and chose the Type 478Q grate for its versatility, Heelsafe® and Anti-slip properties, and colour contrast to the pavers.

Engineers engaged ACO to confirm the hydraulic capacity of the channels. Because of the high volume of pedestrian traffic, no ponding was allowed for the design storm. ACO modelled the channels to outlet locations required by the site plan, showing good hydraulic capacity and reducing the risk of standing water.

ACO KlassikDrain K100 sloped channels with Type 478Q Ductile Iron Heelsafe® anti-slip grates were chosen for their design features by engineer and landscape architect.

#### At a glance

##### Project

Mission Bay Footpath Upgrade

##### Client:

Auckland Transport

##### Brief:

To provide pedestrian friendly surface water management

##### Solution:

ACO's sloped K100 KlassikDrain with ductile iron Heelsafe® Anti-slip grates were chosen

#### Sales office

Telephone 0800 488 080  
sales@aconz.co.nz

[www.aconz.co.nz](http://www.aconz.co.nz)

