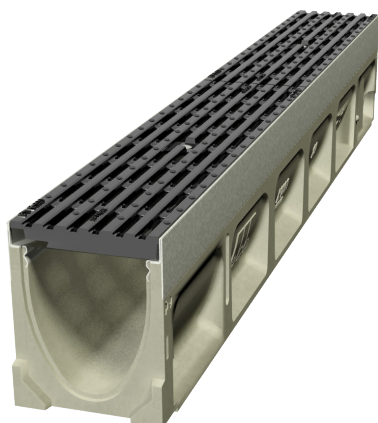


## BNZ Centre Christchurch



### KlassikDrain K100



The BNZ Centre is a key project in the regeneration of Christchurch's CBD. Fronting Hereford and Cashel Streets, it forms a retail and office precinct with interconnecting courtyards and laneways.

Designers sought to provide efficient drainage for the laneways, choosing KlassikDrain K100 with a ductile iron Heelsafe® Anti-Slip grate for its all-round capabilities.

With no rebated joinery at the level thresholds for shop fronts, ACO KlassikDrain was able to be used to provide threshold drainage. Smaller than the E2 requirements, calculations show it is suitable as an acceptable solution under E1.

[www.acodrain.co.nz](http://www.acodrain.co.nz)

#### At a glance

##### Project

BNZ Centre, Cashel Square

##### Client:

Lichfield Holdings Ltd

##### Brief:

To provide courtyard drainage and matching level entry drainage

##### Solution:

ACO's KlassikDrain K100 with Type 478Q ductile iron grates were used

##### Sales office

Telephone 0800 448 080

[info@aconz.co.nz](mailto:info@aconz.co.nz)

[www.aconz.co.nz](http://www.aconz.co.nz)

