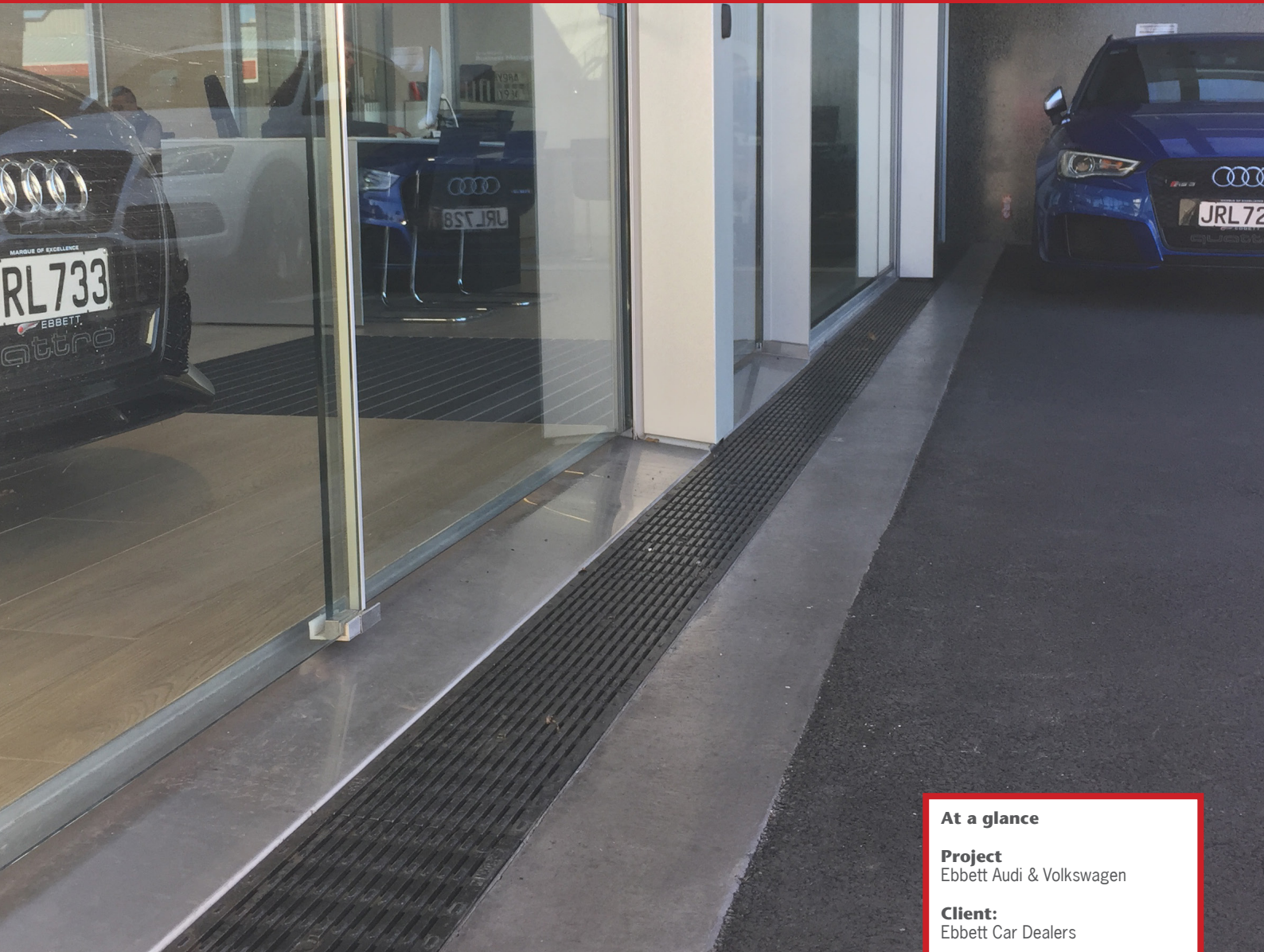
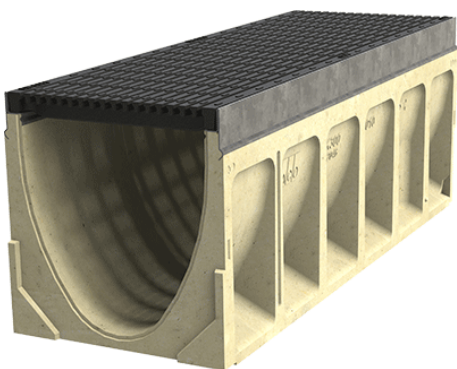


Ebbett Audi & Volkswagen



KlassikDrain K200



Audi and Volkswagen are two heavyweight rivals in the car world. Designers for the Ebbett Audi & Volkswagen sought to create a space which moved away from traditional car yards and drew customers into the showroom where the brands were separated.

To achieve this effect, full length windows and sliding doors were required to highlight the cars on show inside. Level entry threshold drainage was made more complicated by the need to be suitable for vehicle loads.

Architects chose to use the K200 system as an acceptable solution under E1. The drain exceeded the size requirements for E2 but still complemented the architectural design and met load requirements.

www.acodrain.co.nz

At a glance

Project
Ebbett Audi & Volkswagen

Client:
Ebbett Car Dealers

Brief:
To provide level threshold drainage for car traffic

Solution:
ACO's KlassikDrain K200 with Type 678Q Ductile Iron Heelsafe® Anti-Slip grates were used

Sales office

Telephone 0800 448 080
info@aconz.co.nz

www.aconz.co.nz

