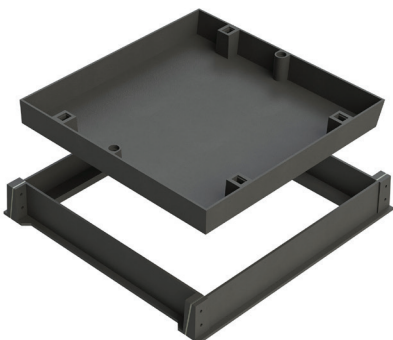


## Pukeahu National War Memorial Park



### Rhinocast® Telecom Approved Access Covers

Wellington's 1932 National War Memorial Carillon Tower has always been highly visible throughout the city. The three year project to create a unified space surrounding this for large civic events was completed in 2015.



In 2012, Wellington City Council announced plans to create an open space around the national war memorial which would act as a focal point for remembrance and be capable of holding large civic events. A high priority was placed on the quality of landscaping and the mixed functionality of the shared spaces.

To achieve this, State Highway 1 was diverted into the Arras tunnel and this involved the relocation of many services. To give secure access, AS3996 Class D access covers were required.

Designers wanted to preserve visual continuity throughout the memorial park, and sought to use recessed access covers. The deep pan and unique rib structure of ACO's Rhinocast® access cover allowed complete flexibility in pavement material choice.

#### At a glance

##### Project

Pukeahu National War Memorial Park

##### Client:

Wellington City Council

##### Brief:

Discrete access covers were required in trafficable areas

##### Solution:

ACO's Rhinocast® Telecom approved access covers were

#### Sales office

Telephone 0800 488 080  
sales@aconz.co.nz

[www.aconz.co.nz](http://www.aconz.co.nz)

