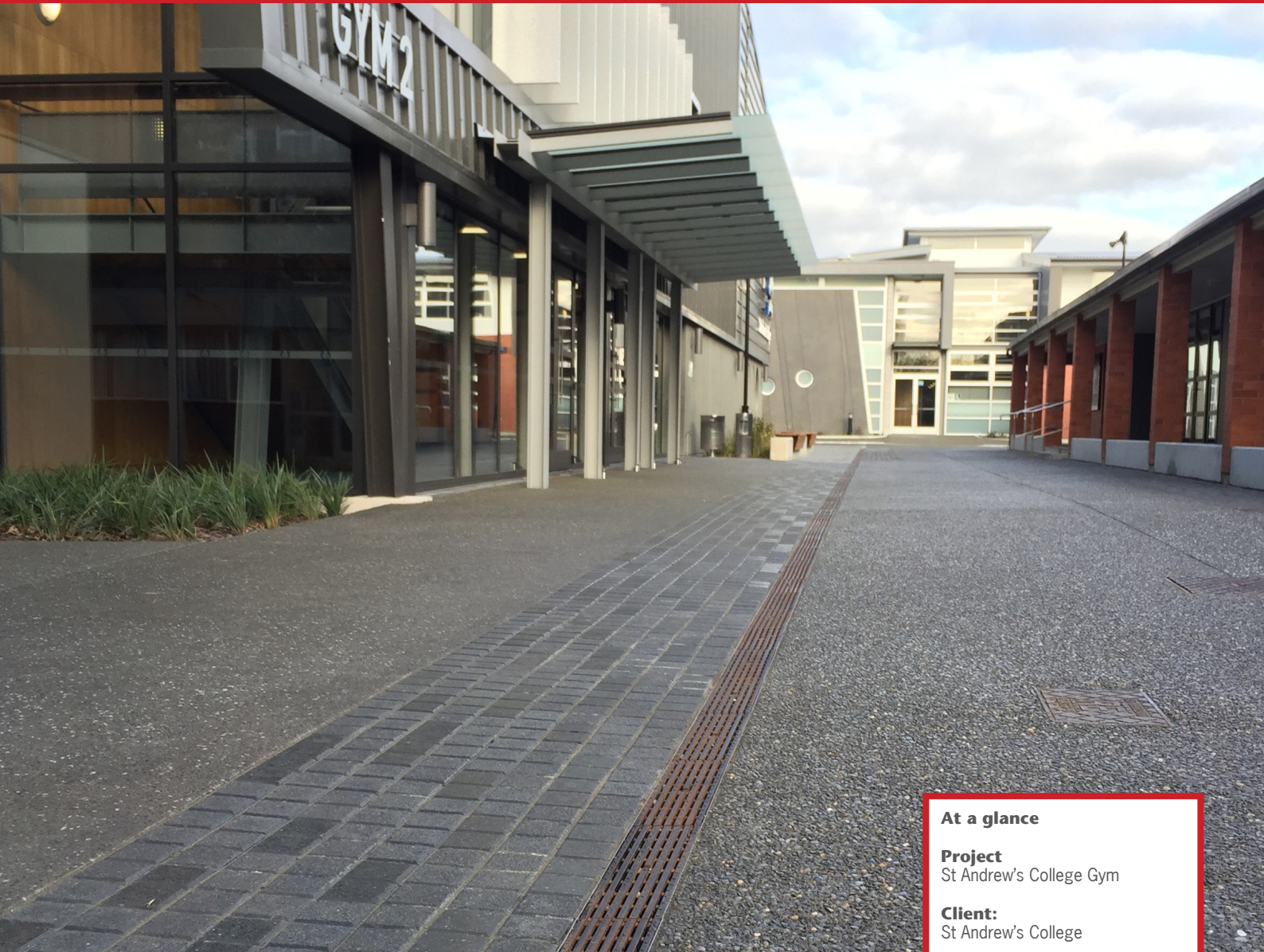
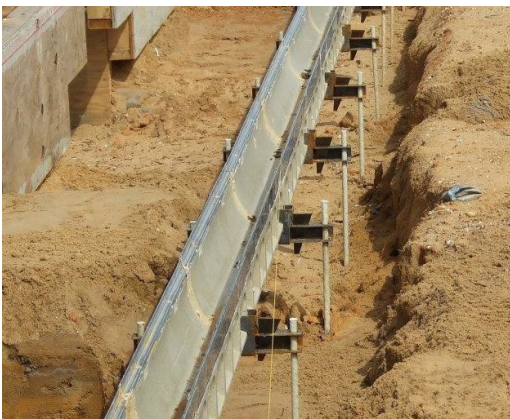


## St Andrew's College Gym



### KlassikDrain K100



St Andrew's College, Christchurch, erected a new gymn building to enhance their sports programme at the school. Also required was a new landscaped laneway joining the new project to existing buildings.

With simple exposed aggregate concrete and paved blocks creating a feature on the surface, the drain was used as a dividing feature. To ensure the drain would be as straight as possible, and for ease of installation, ACO's installation devices were used.

ACO's KlassikDrain K100 with T478Q Heelsafe® Iron Intercept grates were chosen for the durable material properties, Class D load rating and pedestrian friendly finish.

[www.acodrain.co.nz](http://www.acodrain.co.nz)

#### At a glance

##### Project

St Andrew's College Gym

##### Client:

St Andrew's College

##### Brief:

To provide pedestrian friendly drainage of a new laneway

##### Solution:

ACO's KlassikDrain K100 with Type 478Q Iron Intercept Heelsafe® Anti-Slip grate

#### Sales office

Telephone 0800 448 080  
[info@aconz.co.nz](mailto:info@aconz.co.nz)

[www.aconz.co.nz](http://www.aconz.co.nz)

