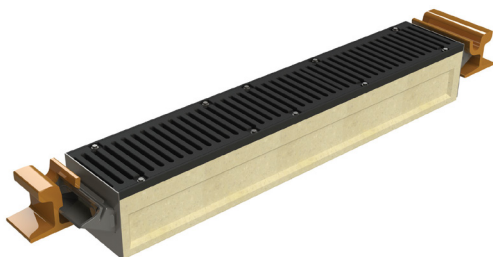


## The Terraces Tramway



### TramDrain 175A



The revitalisation of the Terraces in Christchurch involved the rebuilding and upgrading of the historic tramway system. On a flat site, water within the tram rails needed to be drained for operational safety.

Designers chose to use ACO's TramDrain 175A, a proprietary drainage system designed for this situation. The polymer concrete body provides a lightweight, strong base on which a Class D ductile iron grate can sit. Rubber chutes connect to a variety of rail profiles, and isolate the drain from stray currents in the track.

#### At a glance

**Project**  
The Terraces Tram Revitalisation

**Client:**  
Christchurch City Council

**Brief:**  
To provide drainage of the tram tracks for operational safety

**Solution:**  
ACO's TramDrain 175A

#### Sales office

Telephone 0800 448 080  
info@aconz.co.nz

[www.aconz.co.nz](http://www.aconz.co.nz)

