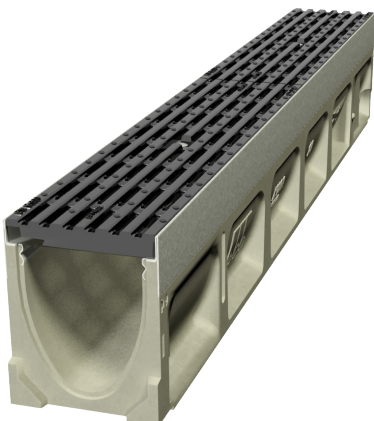


Victoria on the River



KlassikDrain K100



Victoria on the River is an award-winning development designed to link Hamilton's city centre with its river bank. To cope with the height change across the site, designers put in ramps to link terraces.

To make sure stormwater was managed and did not cascade down the site, designers chose to use interceptor drains at the top and base of each ramp.

ACO's KlassikDrain sloped K100 with Heelsafe® Anti-Slip grating and good grate intake capacity. The oxidation of the iron grates complements the iron design features across the site.

At a glance

Project

Victoria on the River

Client:

Hamilton City Council

Brief:

To provide pedestrian friendly ramp drainage

Solution:

ACO's KlassikDrain K100 with Heelsafe® Anti-Slip grates

Sales office

Telephone 0800 448 080

info@aconz.co.nz

www.aconz.co.nz

