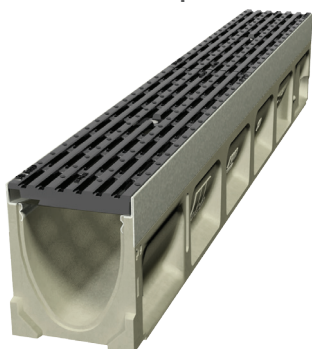


## Christchurch Airport



### KlassikDrain K100 with Type 478Q Grate

Christchurch International Airport is New Zealand's second busiest airport, seeing around 6 million passenger movements a year. To cater for increasing usage, an integrated domestic and international terminal was opened in 2013.



The integration of the existing international and new domestic terminals, as well as the main car park building, created a large forecourt area. Every visitor to the airport uses the forecourt.

To ensure pedestrian safety, designers engaged ACO to assist with the hydraulic design for the stormwater drains. BrickSlot and KlassikDrain options were modelled and a design was tailored to the environment and discharge rate required. A combination of channel depths, in-line sumps and universal junction pits yielded the desired result.

Designers specified ACO's K100 KlassikDrain with Type 478Q iron intercept Heelsafe® anti-slip grates along the 150m frontage. These hard-wearing, durable grates are perfect for pedestrian and luggage trolley traffic and provide a sympathetic architectural finish.

#### At a glance

##### Project

International terminal forecourt

##### Client:

Christchurch Airport

##### Brief:

To provide surface water drainage for the frontage of the new terminal building

##### Solution:

ACO's KlassikDrain K100 was specified with Type 478Q grates

#### Sales office

Telephone 0800 488 080  
sales@aconz.co.nz

[www.aconz.co.nz](http://www.aconz.co.nz)

