



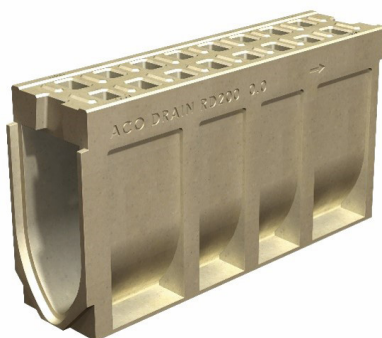
ACO Infrastructure

Monoblock RD200V 20.0

PORTFOLIO

SH1 - SB Market Road Off Ramp

During the SH1 road upgrade in February 2020 the first ACO Monoblock trench channel drain was successfully installed. In collaboration with ASM Auckland System Management and the local contractor TWC, ACO supplied a heavy duty drainage solution that fulfilled the requirements of the highly trafficked highway. With its high capacity, ACO's Monoblock RD200V 20.0 minimised the risk of standing water on the road and due to the monolithic characteristic, there was no risk of flying components as well. Overall the product was chosen for its durability and ease of maintenance access.



Benefits

- The robust one-piece construction, removing the concern of components vibrating loose when frequently trafficked by high speed vehicles.
- Certified to AS 3996 Load Class G (900kN).
- Profiled side walls and strengthening ribs provide channel body strength and anchorage to surrounding concrete.



www.aconz.co.nz

