



ACO Infrastructure



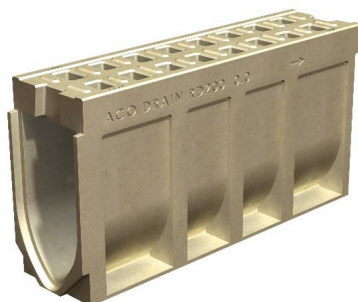
Monoblock RD200V



PORTFOLIO

#### Waitangi Wharf, Chatham Islands

The upgrade of the ageing Waitangi Wharf in the Chatham Islands was a critical step to ensure the lifeline of the only cargo handling facility for the remote archipelago. The Memorial Park Alliance needed a drain that could not only withstand the heavy loading of a container terminal, but would also require minimal maintenance over the course of its design life. ACO's Monoblock RD200V was chosen for its proven track record with heavy loading applications, and its monolithic polymer concrete construction. Without a metal grate chances of weathering and maintenance issues are minimised.



#### Benefits

- ACO's Monoblock RD200V is designed to address the drainage demands of heavy duty areas in fast moving traffic.
- Certified to AS 3996 Load Class G (900kN).
- Access unit complete with removable lockable Ductile Iron grate with provision for drillout for DN160 vertical pipe.



[www.aconz.co.nz](http://www.aconz.co.nz)

