



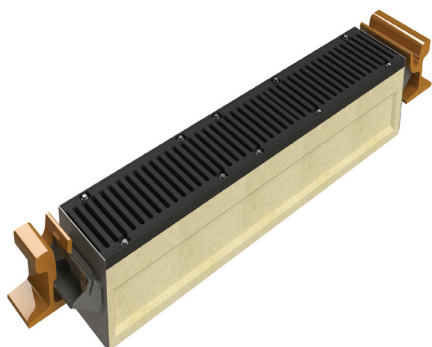
ACO Infrastructure

TramDrain 175A

PORTFOLIO

#### The Terraces Tramway

The revitalisation of the Terraces in Christchurch involved the rebuilding and upgrading of the historic tramway system. On a flat site, water within the tram rails needs to be drained for operational safety. Designers chose to use ACO's TramDrain 175A, a proprietary drainage system designed for this situation. The polymer concrete body provides a lightweight, strong base on which a Class D ductile iron grate can sit. Rubber chutes connect to a variety of rail profiles, and isolate the drain from stray currents in the track.



#### Benefits

- ACO's TramDrain 175A is designed to provide efficient surface water drainage to the grooved rail and track slab.
- The ductile iron grate is certified to AS 3996 Class D (210kN).
- Rubber chute is flexible to suit various tram profiles and isolates TramDrain from stray currents in the tram rail.



[www.aconz.co.nz](http://www.aconz.co.nz)

