



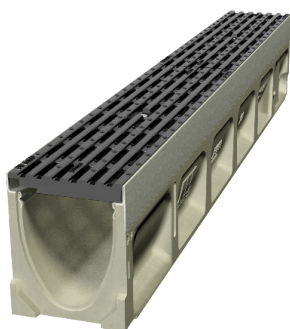
ACO Drain

KlassikDrain K100

PORTFOLIO

### Rotorua Waterfront Development

Proud to be part of this meaningful project at Rotorua's lakefront, ACO supplied its KlassikDrain K100 together with ductile iron grates along the track as part of the development which finished in 2021. The project is a huge milestone for Rotorua's community, that brings its people even closer to the water as they enjoy the aesthetic result. Our product is used to remove any surface water from the footpath along the waterfront, protecting the pedestrians from standing water at all time, while making it look neat and clean for the desired effect.



### Benefits

- ACO's KlassikDrain K100 with Ductile Iron **Heelsafe®** Anti-Slip grates, providing pedestrian friendly surface water management.
- AS 1428.2 (Clause 9c) compliant for wheelchair and walking cane safety.
- Certified to AS 3996 Load Class D.



[www.aconz.co.nz](http://www.aconz.co.nz)

