



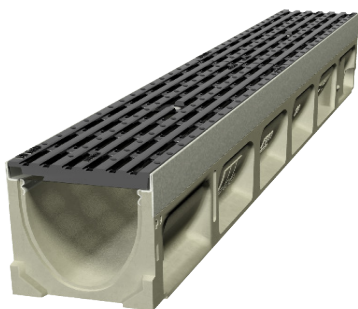
ACO Drain

KlassikDrain K100

PORTFOLIO

#### Mission Bay Footpath Upgrade

When local businesses using the footpath for outdoor dining were impacting on pedestrians. Auckland Transport chose to widen the footpath, creating two dining areas along the building edge and kerb and allowing a passage of pedestrians in between, all completed in time for the busy summer season. Landscape architects chose ACO's sloped K100 KlassikDrain with Ductile Iron **Heelsafe**® Anti-slip grates for its versatility and colour contrast to the pavers. Because of the high volume of pedestrian traffic, no ponding was allowed. ACO modelled the channels to outlet locations required by the site plan, showing good hydraulic capacity and reducing the risk of standing water.



#### Benefits

- Ductile Iron grates with **Heelsafe**® Anti-Slip, providing a pedestrian friendly surface water management.
- The contrast to the pavement creates an attractive architectural finish.
- The proven Class D loading grate matches the NZTA load requirements.



[www.aconz.co.nz](http://www.aconz.co.nz)

