



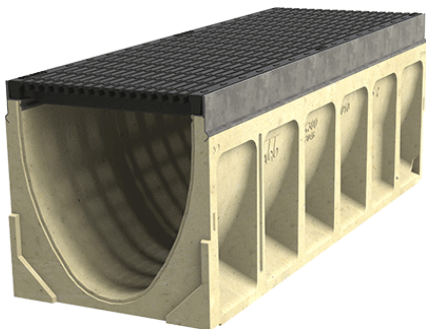
ACO Drain

KlassikDrain K200

PORTFOLIO

#### Briscoes Carpark - Wellington

The redevelopment of a vacant plot of land in central Wellington into a viable car park for the central Briscoes store, and surrounding retail, presented a challenge for dealing with stormwater running onto the road. The site was elevated from road level and sloped towards the pavement. Engineers were able to use rain gardens to capture most of the stormwater, however a pedestrian friendly grated channel was required for complete capture of the driveway crossings.



#### Benefits

- Iron Intercept grate with **Heelsafe**® Anti-Slip, providing a pedestrian friendly trafficable surface water management.
- High load Class D allows heavy-duty vehicles up to 210KN.
- Recesses in the edge rail fit around 'anti-shunt' lugs on the grate to prevent longitudinal movement.



[www.aconz.co.nz](http://www.aconz.co.nz)

