



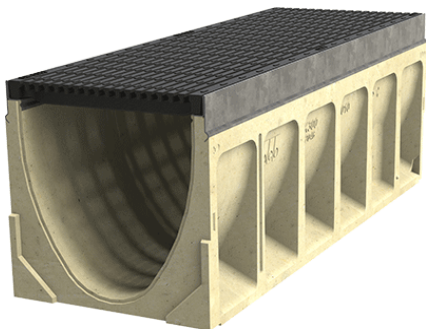
ACO Drain

KlassikDrain K200

PORTFOLIO

#### ASB Showgrounds forecourt

Sites with inclines present a challenge to traditional pipe and line drainage systems, often a sloped channel is the best solution. The area leading to the new exhibition halls at the ASB showgrounds had just this problem. Sloping down from a raised car park towards the main entry, but also needing to match the varying contours and curved building line, designers chose to use a sloped grated channel drain for most efficient surface water capture.



#### Benefits

- Iron Intercept grate with **Heelsafe®** Anti-Slip, providing a pedestrian friendly trafficable surface water management.
- The system is suitable for heavy duty vehicles used to install and transport a variety of exhibitions.
- Recesses in the edge rail fit around 'anti-shunt' lugs on the grate to prevent longitudinal movement.



[www.aconz.co.nz](http://www.aconz.co.nz)

