



ACO Drain

## KlassikDrain KS100

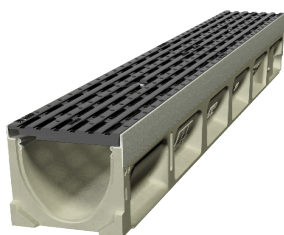
PORTFOLIO

### New World Ravenswood Canterbury Region

At the public space near the entrance of the New World Ravenswood you will find our ACO KlassikDrain KS100 with stainless steel Anti-Slip longitudinal grates. This system keeps the entrance area clear of any standing water to prevent slipping hazards. To keep the visitors safe, the grates are Heelsafe Anti-Slip, wheelchair, walking cane and bicycle safe. The stainless grates match the fresh and modern look of the newly built supermarket and give a taste of New World's hygiene standards.

### Benefits

- ACO's KlassikDrain KS100 with stainless steel **Heelsafe**<sup>®</sup> Anti-Slip longitudinal grates, providing a pedestrian friendly level surface water management.
- Grates are wheelchair, walking cane and bicycle safe.
- Certified to AS 3996 Class B loading, the grate matches the NZTA load requirements.



[www.aconz.co.nz](http://www.aconz.co.nz)

