



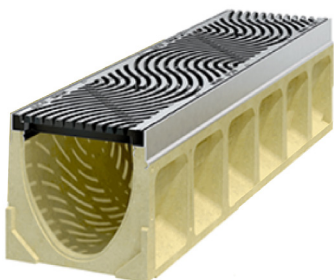
ACO Drain

## KlassikDrain KS200

PORTFOLIO

### Mitre 10 Garden Centre Papanui

Including the Mitre 10 Garden Centre in Papanui, ACO's KlassikDrain KS200 together with Ductile Iron Wave grates has become a standard specification for many Mitre 10 Garden Centres across NZ. As part of the expansion of the garden centre in Papanui the drainage system was installed in June 2019 to manage the surface water and at the same time withstand heavy trolleys having solid point loading wheels. Our product has proven its functionality in outdoor retail environments. Overall its robust ductile iron grates matching the environment of the garden centre for an harmonic finish.



### Benefits

- ACO's KlassikDrain KS200 with Ductile Iron grates, providing a pedestrian friendly surface water management.
- Recesses in the edge rail fit around 'anti-shunt' lugs on the grate to prevent longitudinal movement.
- AS 1428.2 (Clause 9c) compliant for wheelchair and walking cane safety.



[www.aconz.co.nz](http://www.aconz.co.nz)

