



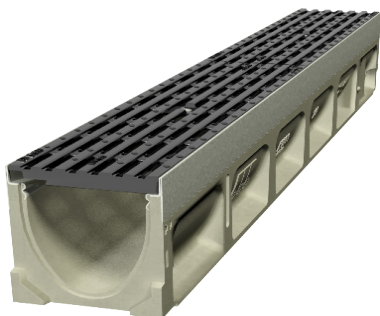
ACO Drain

KlassikDrain K100

PORTFOLIO

KiwiRail EMU Yard

KiwiRail's introduction of Matangi class trains on the Wellington network necessitated an upgrade to the Electric Multiple Unit (EMU) yard to allow for ease of maintenance. The scope of the works included adding new tracks at the entrance to the sheds, and specifiers took the opportunity to improve surface drainage across the site. No alloy was allowed in contact with the train tracks and any grate had to be an electrical insulator. ACO's Type 492Q composite grates were ideal for this situation.



Benefits

- ACO's composite grates with **Heelsafe**® Anti-Slip, providing a safe surface water management for the employees.
- Certified to AS 3996 Load Class C 250 (kN).
- The composite plastic grates ensure electrical insulation.
- Raised pattern and nodes for tread durability.

