



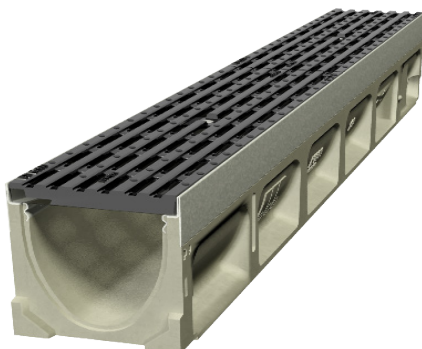
ACO Drain

KlassikDrain K100

PORTFOLIO

BNZ Centre Christchurch

The BNZ Centre is a key project in the regeneration of Christchurch's CBD. Fronting Hereford and Cashel Streets, it forms a retail and office precinct with interconnecting courtyards and laneways. Designers sought to provide efficient drainage for the laneways, choosing KlassikDrain K100 with a ductile iron **Heelsafe**® Anti-Slip grate for its all-round capabilities.



Benefits

- Ductile Iron grate with **Heelsafe**® Anti-Slip, providing a pedestrian friendly surface water management.
- ACO's KlassikDrain K100 is an acceptable threshold drainage solution under E1, combining courtyard drainage with matching level entry drainage.
- Certified to AS 3996 Class D loading, the grate matches the NZTA load requirements.



www.aconz.co.nz

