



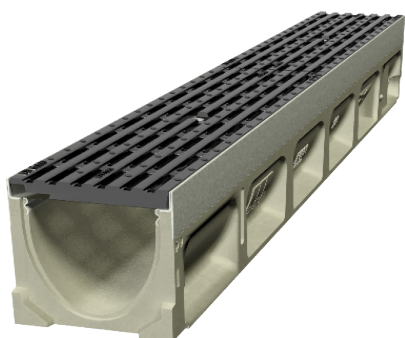
ACO Drain

KlassikDrain K100

PORTFOLIO

Parnell Commercial Development

The modernisation of Auckland's shopping villages has seen the refurbishment of many older buildings into bright, modern spaces. This project turned a tired 60's building into a premium mixed use commercial development. To cater for retail, office and hospitality tenants, designers chose to use level thresholds for ease of access. The levels of the adjacent footpath meant a drain would be required, and needed to complement the striking black tile facade. Therefore ACO's KlassikDrain K100 with Type 478Q Ductile Iron **Heelsafe**® Anti-Slip grates were chosen.



Benefits

- ACO's Type 478Q Ductile Iron grates with **Heelsafe**® Anti-Slip, providing a pedestrian friendly surface water management.
- The KlassikDrain KS100 is an acceptable threshold drainage solution under E1.
- The system complies with AS 1428.2 (Clause 9c), Access and Mobility, ensuring safe passage of walking canes and wheelchairs.



www.aconz.co.nz

