



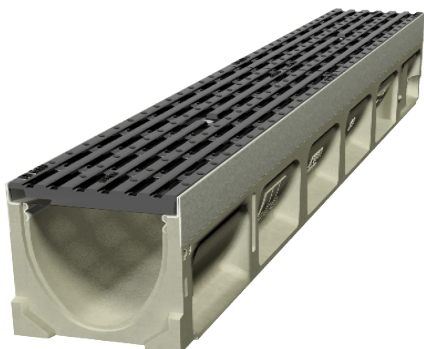
ACO Drain

KlassikDrain K100

PORTFOLIO

London Quay Picton

Marlborough District Council's 2009 project to upgrade London Quay saw the removal of industrial components, and provision for an open shared space next to the Picton foreshore. The landscape design featured wide strips running parallel to the wharves and jetties, leading the eye out from the shore to the Sounds. Designers recognised the hydraulic efficiency of grated channel drains over point drains, and decided to feature the channels.



Benefits

- Iron Intercept grate with **Heelsafe**® Anti-Slip, providing a pedestrian friendly trafficable surface water management.
- The proven Class D loading grate matches the NZTA load requirements.
- Recesses in the edge rail fit around 'anti-shunt' lugs on the grate to prevent longitudinal movement.



www.aconz.co.nz

