



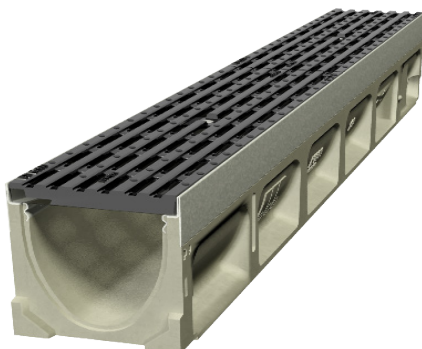
ACO Drain

KlassikDrain K100

PORTFOLIO

St Andrew's College Gym

St Andrew's College, Christchurch, erected a new gym building to enhance their sports programme at the school. Also required was a new landscaped laneway joining the new project to existing buildings. With simple exposed aggregate concrete and paved blocks creating a feature on the surface, ACO's KlassikDrain K100 was used as a dividing feature. To ensure the drain would be as straight as possible, and for ease of installation, ACO's installation devices were used.



Benefits

- Iron Intercept grate with **Heelsafe®** Anti-Slip, providing a pedestrian friendly surface water management.
- Certified to AS 3996 Class D loading, the grate matches the NZTA load requirements.
- Recesses in the edge rail fit around 'anti-shunt' lugs on the grate to prevent longitudinal movement.



www.aconz.co.nz

