



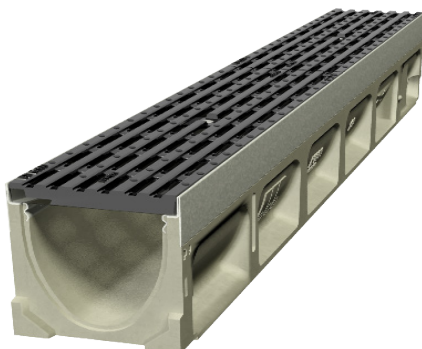
ACO Drain

KlassikDrain K100

PORTFOLIO

Victoria on the River

Victoria on the River is an award-winning development designed to link Hamilton's city centre with its river bank. To cope with the height change across the site, designers put in ramps to link terraces. To make sure stormwater was managed and did not cascade down the site, designers chose to use interceptor drains at the top and base of each ramp. The oxidation of ACO's KlassikDrain K100 iron grates complements the iron design features across the site for an attractive architectural finish.



Benefits

- ACO's KlassikDrain sloped K100 Iron Intercept grates with **Heelsafe**® Anti-Slip, providing a pedestrian friendly ramp drainage.
- Certified to AS 3996 Class D loading, the grate matches the NZTA load requirements.
- The grate complements the iron design of the surrounding environment, creating an attractive architectural finish.



www.aconz.co.nz

