



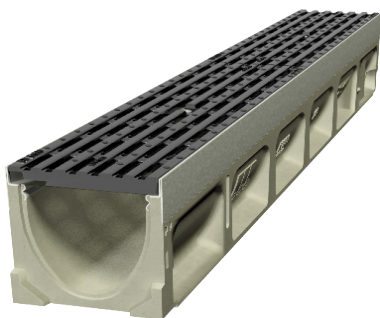
ACO Drain

KlassikDrain K100

PORTFOLIO

Enner Glynn School

In June 2019 our ACO KlassikDrain K100 with Ductile Iron **Heelsafe**® Anti-Slip grates was installed at the Enner Glynn School in Nelson. In a contained space between a retaining wall and new class room buildings, the ACO K100 sloped system is used to remove all surface water while ensuring the grate is **Heelsafe**® anti-slip and wheel chair, walking cane and bicycle safe. These features are essential for a school environment while allowing for a Class D loading. ACO's KlassikDrain, providing protection and minimising against any future slipping and tripping hazards .



Benefits

- ACO's KlassikDrain K100 with Ductile Iron **Heelsafe**® Anti-Slip grates, providing pedestrian friendly surface water management.
- AS 1428.2 (Clause 9c) compliant for wheelchair and walking cane safety.
- Certified to AS 3996 Load Class D.



www.aconz.co.nz

