



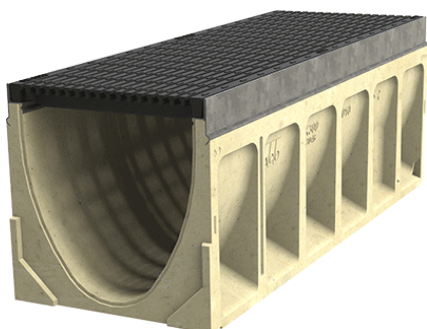
ACO Drain

## KlassikDrain K200

PORTFOLIO

### **Australis Nathan Building/Galway Street**

Australis House and Nathan Building were built in 1903 and 1904 respectively. 2016 saw a refurbishment to both, and reopened with high profile tenants. Outside, the shared space was upgraded. Ground falls required surface drainage, and service pits required a discreet access cover, all rated to load class D.



### **Benefits**

- Ductile Iron slotted grates allowing easy maintenance access with completely removable grates.
- Certified to AS 3996 Class D loading, the grate matches the NZTA load requirements.
- Recesses in the edge rail fit around 'anti-shunt' lugs on the grate to prevent longitudinal movement.



[www.aconz.co.nz](http://www.aconz.co.nz)

