



ACO Drain

KlassikDrain KS100

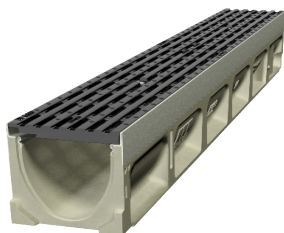
PORTFOLIO

Christchurch Cathedral Square

Following the destructive 2011 Christchurch earthquake, considerable repairs were required to be undertaken for the Christchurch Cathedral Square and surrounding area. With the Square now in full view from new buildings looking in from the east and the largely intercepted Convention Centre coming in from the North it was important to make the Cathedral Square the heart of the city. Achieving this successfully with the building and landscape design, the Christchurch City Council specified using ACO's 5 Star Stainless Steel Grate on the KS100 sloping channels to accompany the wavy design garden feature that will be designed around the square in the future.

Benefits

- ACO's Stainless Steel 5 Star grate with **Heelsafe**® Anti-Slip, providing a pedestrian friendly surface water management.
- AS 1428.2 (Clause 9c) compliant for wheelchair and walking cane safety.
- The grate matches future design garden features for an attractive architectural finish.



www.aconz.co.nz

