



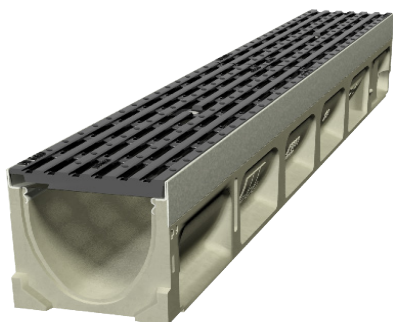
ACO Drain

## KlassikDrain KS100

PORTFOLIO

### New Brighton Hot Pools

As a part of the regeneration project of New Brighton's Hot Pools designers sought of a drainage solution that is corrosion resistant as it is installed in the spray area of the pools. The drain was required to channel the standing water splashing from the pool, being a slipping hazard for visitors. Therefore ACO's KlassikDrain KS100 with **Heelsafe**® Anti-Slip corrosion resistant composite grates was chosen. The striking colour of the composite grates creates an aesthetic finish with its contrast to the surrounding environment.



### Benefits

- ACO's composite grates with **Heelsafe**® Anti-Slip, providing a pedestrian friendly surface water management.
- Raised pattern and nodes for tread durability.
- The stainless steel edgerail combined with the composite grate ensures corrosion resistance of the system.



[www.aconz.co.nz](http://www.aconz.co.nz)

