



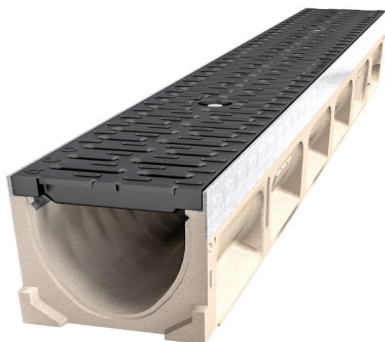
ACO Drain

KlassikDrain KS100

PORTFOLIO

Otahuhu Recreation Centre

As part of a city wide amenities upgrade program Auckland City Council launched a \$30.9m project in 2013 to add a pool, aquatic centre and library to the existing recreation centre. Poolside drainage was required to remove standing water splashed from the Pool. Designers specified ACO's KlassikDrain KS100 with a custom stainless steel edge rail and Type 492Q composite **Heelsafe**® Anti-Slip grates to combat the corrosive chlorinated water and maintain pedestrian safety throughout the complex.



Benefits

- ACO's composite grates with **Heelsafe**® Anti-Slip, providing a pedestrian friendly surface water management.
- Raised pattern and nodes for tread durability.
- The stainless steel edgerail combined with the composite grate ensures corrosion resistance of the system.



www.aconz.co.nz

