



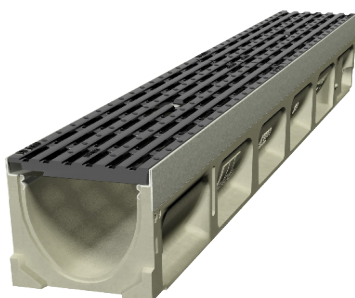
ACO Drain

PowerDrain S100K

PORTFOLIO

#### Rotokauri Transport Hub

After a festive ceremony, Hamilton's new transport hub opened in February 2021. The hub includes a bus interchange, park & ride facilities and a rail station. People now have access to several transport facilities, increasing mobility for short and long distance travels. To manage surface water and keep pedestrians safe, ACO supplied its PowerDrain S100K channels at the precinct next to the rail platform. The grates are Ductile Iron **Heelsafe**® Anti-Slip and wheelchair and walking cane safe, which will be essential with high pedestrian traffic expected in the future. A part from the S100K, ACO's S200K were installed along the rail platform.



#### Benefits

- Ductile Iron grate with **Heelsafe**® Anti-Slip, providing a pedestrian friendly surface water management.
- Ductile Iron Edge Rail - integrally cast-in rail provides maximum strength and protection for the channel body.
- Recesses in the edge rail fit around 'anti-shunt' lugs on the grate to prevent longitudinal movement.
- Certified to AS 3996 Load Class G (900 kn) .



[www.aconz.co.nz](http://www.aconz.co.nz)

