



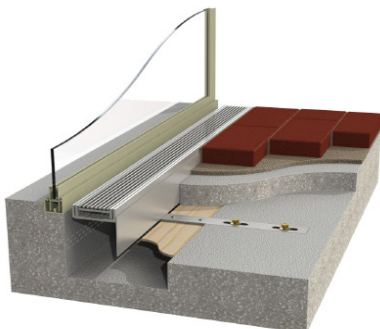
ACO ThresholdDrain

ThresholdDrain with perforated grate

PORTFOLIO

Hamilton North School

In 2014 Hamilton North School embarked upon construction of a newly built multi-purpose administration block. Housing administration areas, office spaces and specialist storage spaces, designers wanted the building to be flexible as to what could be accomplished. Part of this included a large number of level threshold entries. ACO's ThresholdDrain was specified as the best solution and worked well to the NZ building code, the tight budget and time-frame.



Benefits

- ACO's ThresholdDrain convinces with its code-compliance, functionality and aesthetics.
- Protecting the entrance threshold of surface water entering the building, also runoff from doors and windows is collected during storms.
- The system provides E2 compliant level threshold drainage, complying with AS 1428.2 (Clause 9c), Access and Mobility, ensuring safe passage of walking canes and wheelchairs.



www.aconz.co.nz

